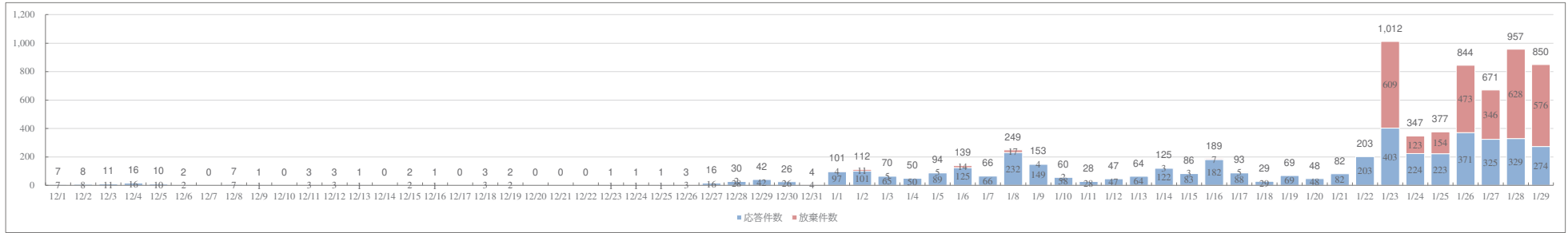
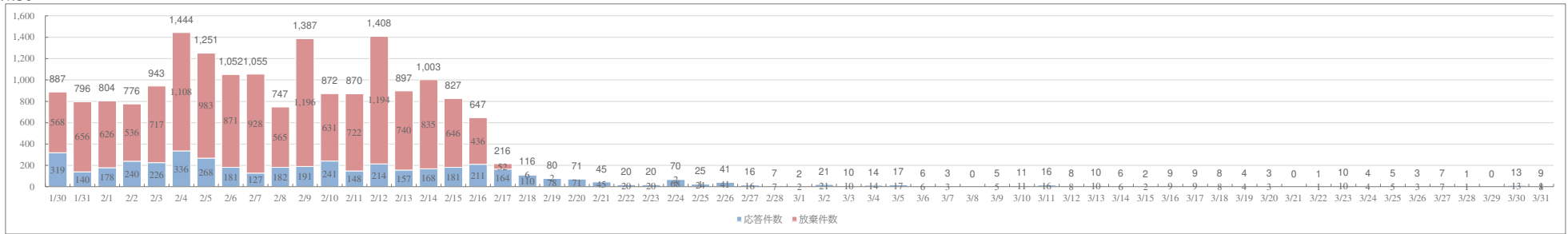


【入電・応答・放棄件数】

<R7.12.1~R8.1.29>

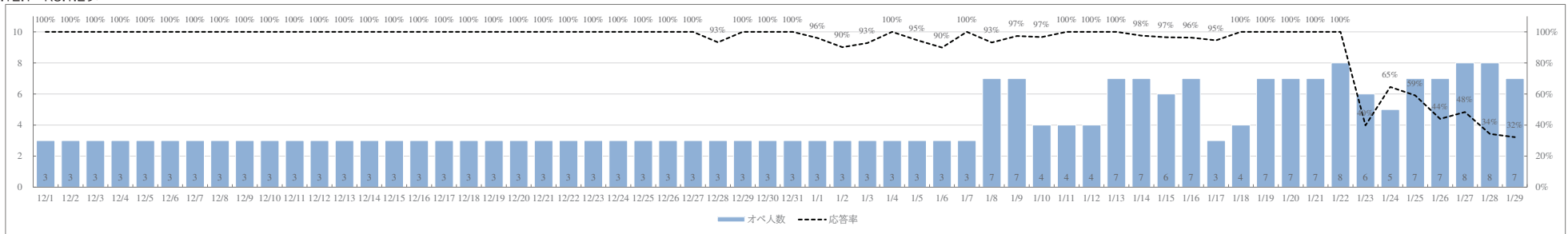


<R8.1.30~>

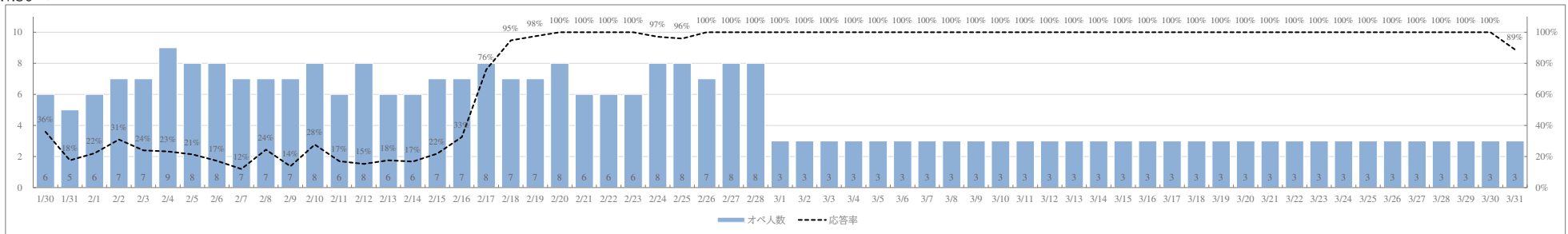


【従事オペレーター数と応答率】

<R7.12.1~R8.1.29>

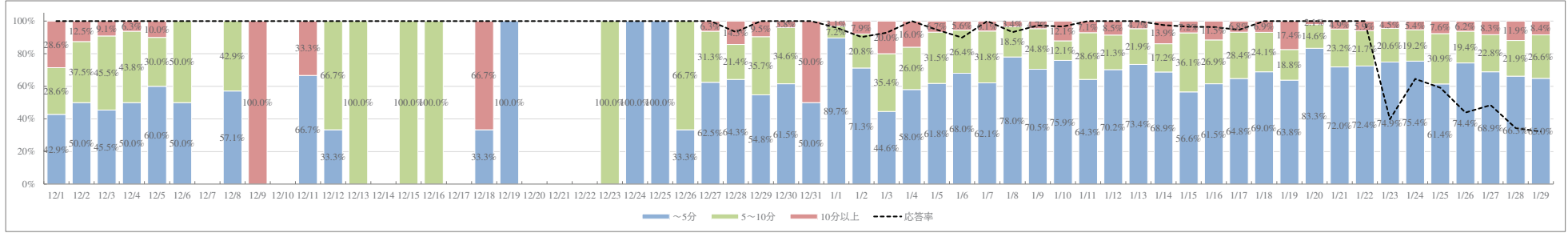


<R8.1.30~>

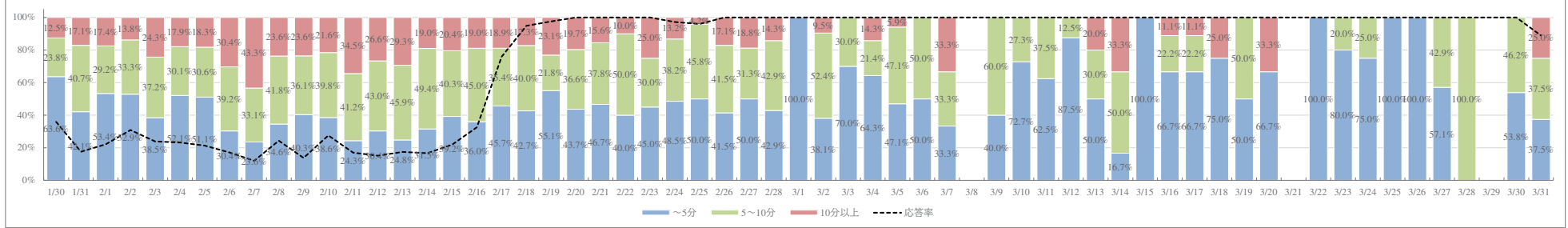


【通話時間ごと応答件数構成比と応答率】

<R7.12.1~R8.1.29>

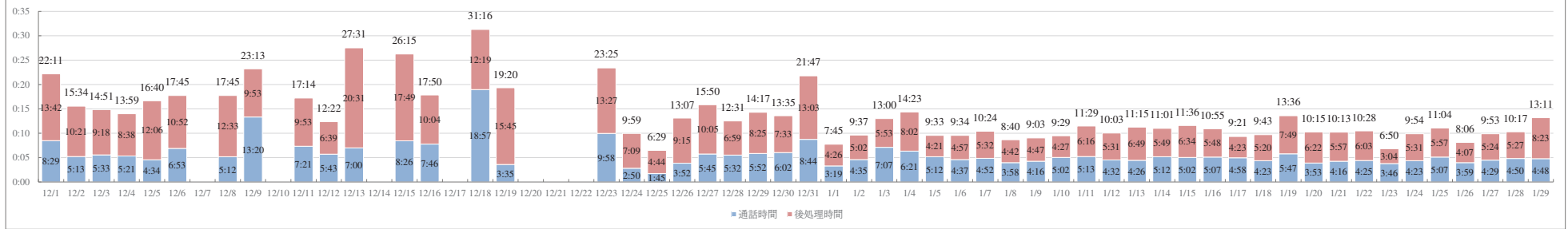


<R8.1.30~>



【平均対応時間（通話時間+後処理時間）】

<R7.12.1~R8.1.29>



<R8.1.30~>

