



This event is hosted with the support of  
"Meiji Yasuda Life Insurance  
Company's Local Vitality Project."



COMMEMORATING THE 400TH  
ANNIVERSARY OF AOMORI PORT  
SNOW! LIGHTS! ARTS!

400th  
Anniversary

# あおもり

Aomori  
Winter  
Wonderland  
2024

## 冬の コンタ ランド

令和6年  
冬

Nebuta  
Technique-Produced  
Illumination

Dec 13, 2024~  
Feb 2, 2025

Music and Gourmet Square

February 1st and 2nd, 2025

Aomori Lights and  
Paper Pageants

Dec 13, 2024~  
Feb 2, 2025

The 47th  
Aomori Winter  
Festival

February 1st and  
2nd, 2025

The Motsuke  
Festival and  
Winter Fireworks

Feb 1, 2025

Organizers

Snow! Lights! Arts! Aomori Winter Wonderland Executive Committee

〈Executive Office〉Aomori City, Aomori Chamber of Commerce and Industry,  
Aomori Tourism and Convention Association, Aomori Minato Club  
〈Cooperation〉Japan Ground Self-Defense Force's Aomori Garrison

Inquiries

(Sat, Sun, holidays)

Aomori City, Economics Department, Tourism Division ☎017-734-5179

Aomori Tourism and Convention Association

☎017-723-7211

Please understand that there may be some changes in the contents of the event.



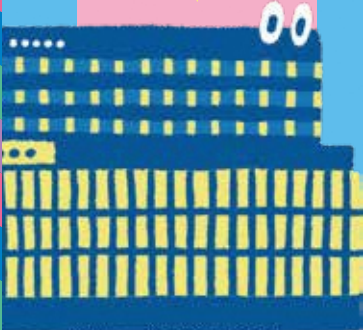
HAKKODAMARU



A-FACTORY



AOMORI  
STATION



CIVIC HALL

### Aomori Lights and Paper Pageants



**Period** Dec 13, 2024~  
Feb 2, 2025  
**Time** 16:00 ~ 21:00  
(on 13/12 it starts after the opening ceremony)  
**Place** A-FACTORY/Hakkodamaru/  
inside JR Shin-Aomori Station's  
Shinkansen Concourse Area

The "Snowmen," Japanese paper artworks made by children, illuminate the Aomori Bay Area with warm light.

### Small Nebuta Parade



**Period** Feb 1, 2025  
**Time** 17:00~17:30  
**Place** In front of Aomori Station~WA RASSE West Square.

Let's enjoy the Nebuta festival in winter as well! There will be a parade of small Nebuta floats and traditional Hayashi music performances. After the parade, the Nebuta will be put up for display on a special stage on the West Square.

### The Motsuke Festival and Winter Fireworks

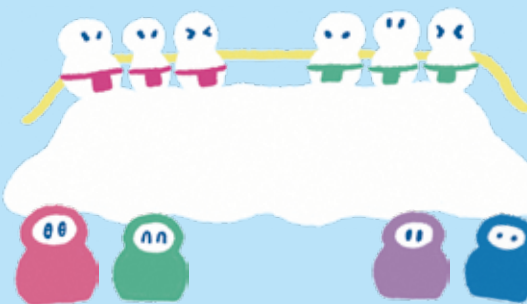


**Period** Feb 1, 2025  
**Time** 17:30~19:00  
**Place** WA RASSE West Square

The "motsuke" men compete in an exciting tug-of-war in the snow. After the battle, winter fireworks will color the finale!



NEBUTA MUSEUM  
WA RASSE



### Music and Gourmet Square



**Period** February 1st and 2nd, 2025  
**Time** 10:00~20:00 (plan)  
**Place** WA RASSE West Square

Aside from kitchen cars and stage events, you can also enjoy local seafood in igloos furnished with chairs and tables.

Scheduled performances: Jonagold, GMU, pacchi

### Nebuta Technique- Produced Illumination



**Period** Dec 13, 2024~  
Feb 2, 2025  
**Time** 16:00~21:00  
**Place** Nebuta Museum WA RASSE Outdoor Passage

Many lights, created with Nebuta-making techniques by artists such as Hiroo Takenami and Rika Tsukamoto, will illuminate WA RASSE.



AOMORI PREFECTURAL CENTER  
FOR INDUSTRY AND TOURISM,  
ASPAM

### Opening Ceremony



**Period** Dec 13, 2024  
**Time** 17:45~18:00  
**Place** ASPAM, West Side Parking Lot

Opening ceremony co-sponsored by the "ASPAM Christmas Market" and "Aomori Winter Wonderland." The Christmas tree, "Aomori Lights and Paper Pageants," and "Nebuta Technique-Produced Illumination" will be lit at the same time.

### AOIUMI PARK



### The 47th Aomori Winter Festival



**Period** February 1st and 2nd, 2025  
**Time** 9:00~15:00  
**Place** Aoiumi Park (Behind ASPAM)

The centerpiece of this annual event is a large snow slide created by the Japan Ground Self-Defense Force's Aomori Garrison! There will be plenty of family fun!



ASPAM STREET



Scan the QR code for more information on Winter Wonderland.  
Scan here to enter the photo contest!

### NEBUKO

**Period** Jan 24, 2025~  
Feb 2, 2025  
**Time** 9:00~22:00  
**Place** Civic Hall 1st floor, Gallery

The NEBUKO, artistic representations of ocean waves, are back on display for a limited time!

### Shinmachi Snow Viewing Lanterns

**Period** Dec 13, 2024~  
Feb 28, 2025  
**Time** 17:00~ **Place** Shinmachi Street

"Snow Viewing Lanterns" will be on Shinmachi Street's lamp posts, illuminating Shinmachi's winter landscape with vivid color.

### Aomori Bar-Gai

**Period** Feb 1, 2025  
**Inquiries** Aomori Chamber of Commerce and Industry, Tel. 017-734-1311

Purchase a ticket and enjoy snacks and drinks at participating stores in the city. This barhopping event will be held at the same time as Winter Wonderland! So after having fun in the snow at the bay area, let's enjoy some barhopping!

### PHOTO CONTEST

**Entry period** Dec 13, 2024~Feb 2, 2025

Details:

Post your photo on Instagram along with the hashtag #aomori\_w\_w\_2024\_2025 to win prizes! Scan the QR code above for more details or visit our Instagram page @a\_w\_w\_official



※写真はイメージです。