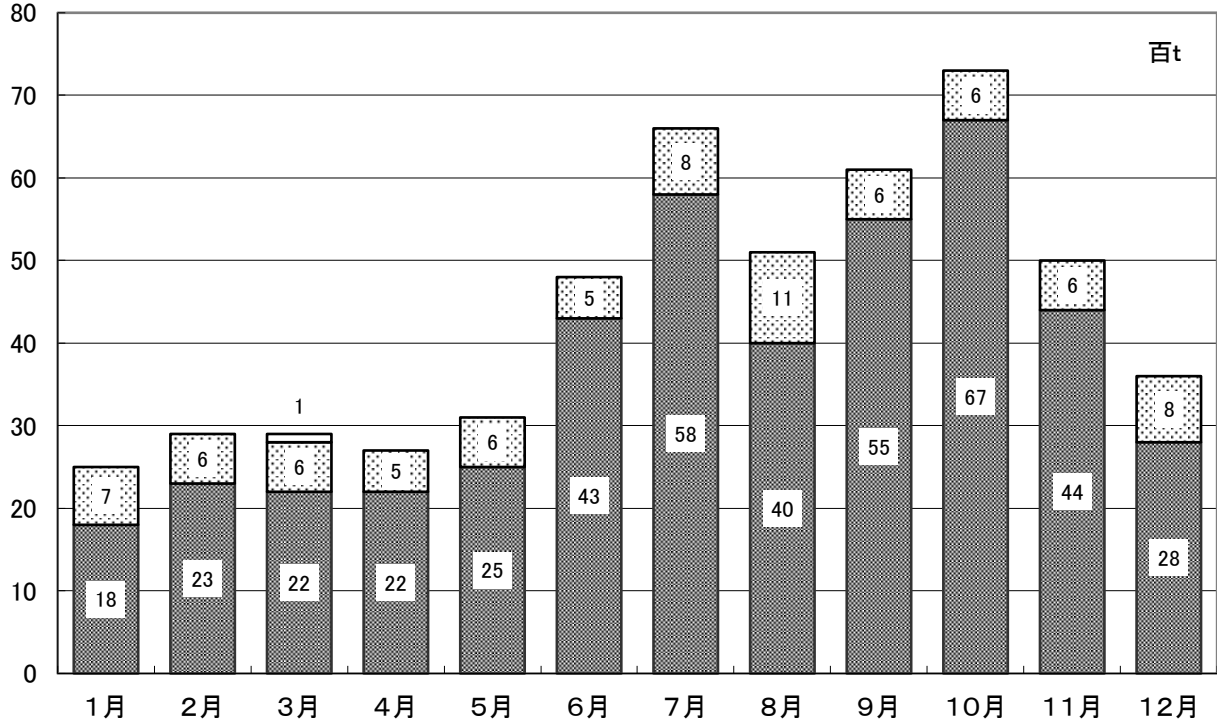


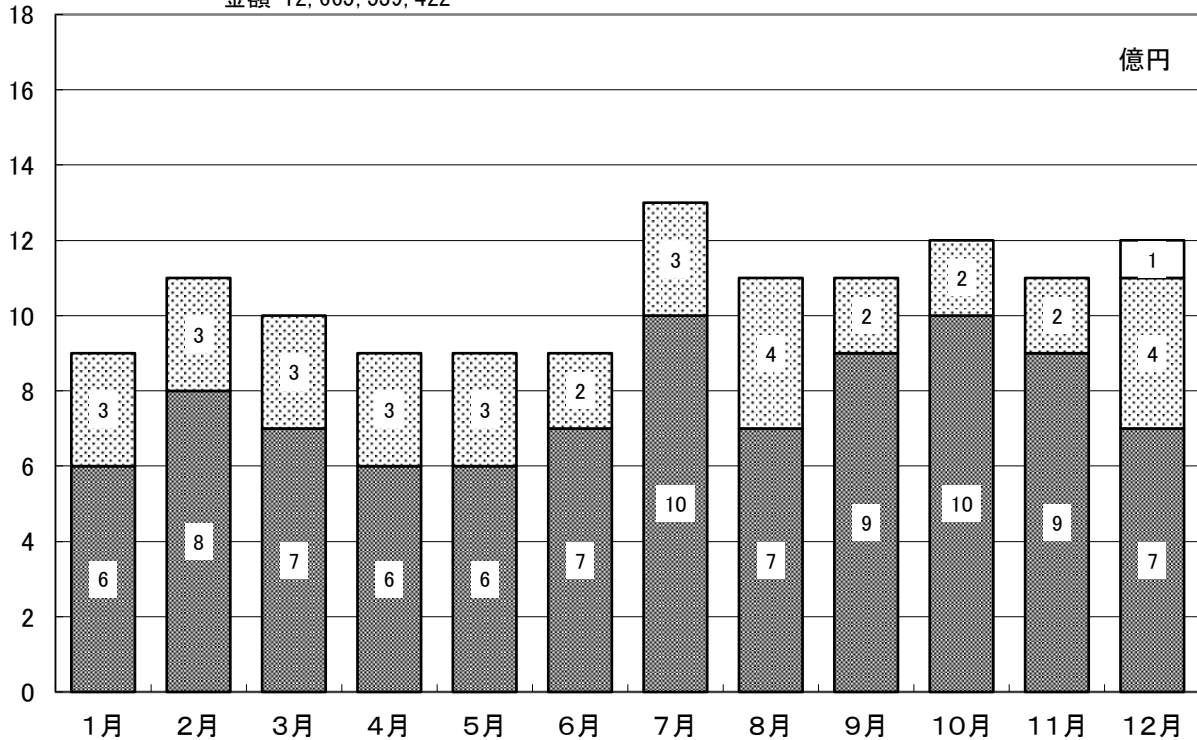
種別・月別取扱高対比図

■ 野菜 ▨ 果実 □ その他・加工品・鳥卵

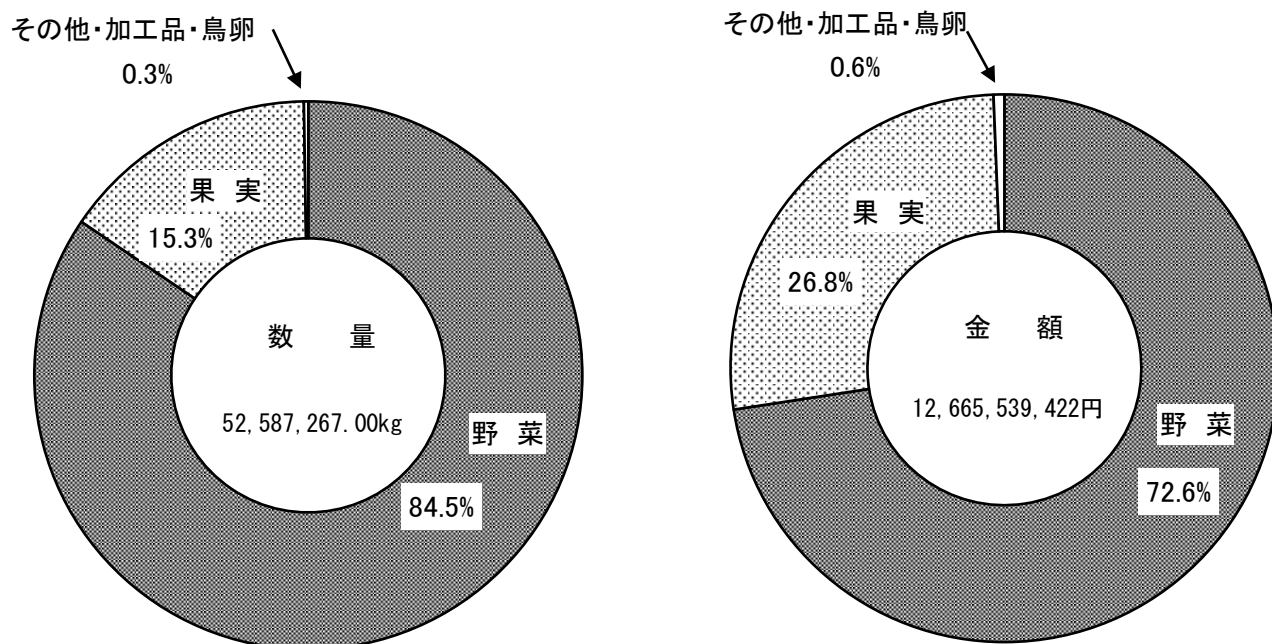
数量 52,587,267.00kg



金額 12,665,539,422



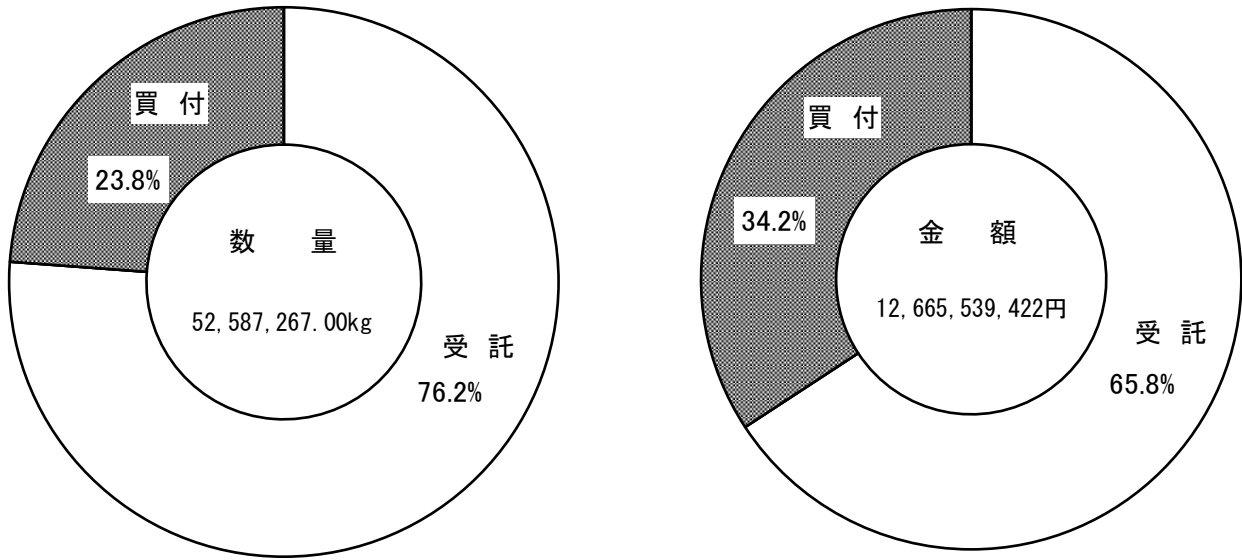
種別取扱高対比図



受託・買付別・月別取扱高表

	取扱数量 (kg)			取扱金額 (円)		
	受託	買付	計	受託	買付	計
1月	1,417,840.15	1,062,899.09	2,480,739.24	516,903,301	415,464,955	932,368,256
2月	1,756,952.46	1,125,446.03	2,882,398.49	625,085,118	416,962,894	1,042,048,012
3月	1,617,506.20	1,200,970.28	2,818,476.48	605,887,099	441,106,362	1,046,993,461
4月	1,382,300.51	1,381,003.28	2,763,303.79	383,086,019	478,447,478	861,533,497
5月	1,661,053.97	1,391,123.61	3,052,177.58	411,993,011	447,663,475	859,656,486
6月	3,554,891.22	1,198,662.16	4,753,553.38	564,518,260	354,083,623	918,601,883
7月	5,689,822.55	984,791.39	6,674,613.94	1,036,918,733	298,879,028	1,335,797,761
8月	4,368,317.45	679,177.81	5,047,495.26	887,577,741	218,034,983	1,105,612,724
9月	5,269,363.99	836,612.17	6,105,976.16	898,416,787	247,787,780	1,146,204,567
10月	6,594,102.06	752,316.32	7,346,418.38	981,232,060	260,617,347	1,241,849,407
11月	4,346,785.34	672,839.43	5,019,624.77	809,935,593	289,732,309	1,099,667,902
12月	2,399,707.85	1,242,781.68	3,642,489.53	610,157,087	465,048,379	1,075,205,466
計	40,058,643.75	12,528,623.25	52,587,267.00	8,331,710,809	4,333,828,613	12,665,539,422

受託・買付別取扱高対比図



卸売業者販売先別取扱高表

	仲卸業者	売買参加者	その他	合計
数量(kg)	17,552,135.05	17,063,095.34	17,972,036.61	52,587,267.00
金額(円)	5,719,057,260	3,216,294,948	3,730,187,214	12,665,539,422

卸売業者販売先別取扱高対比図

